

GT-MPU216-H380-LXX

G-Switch

G-Switch P/N

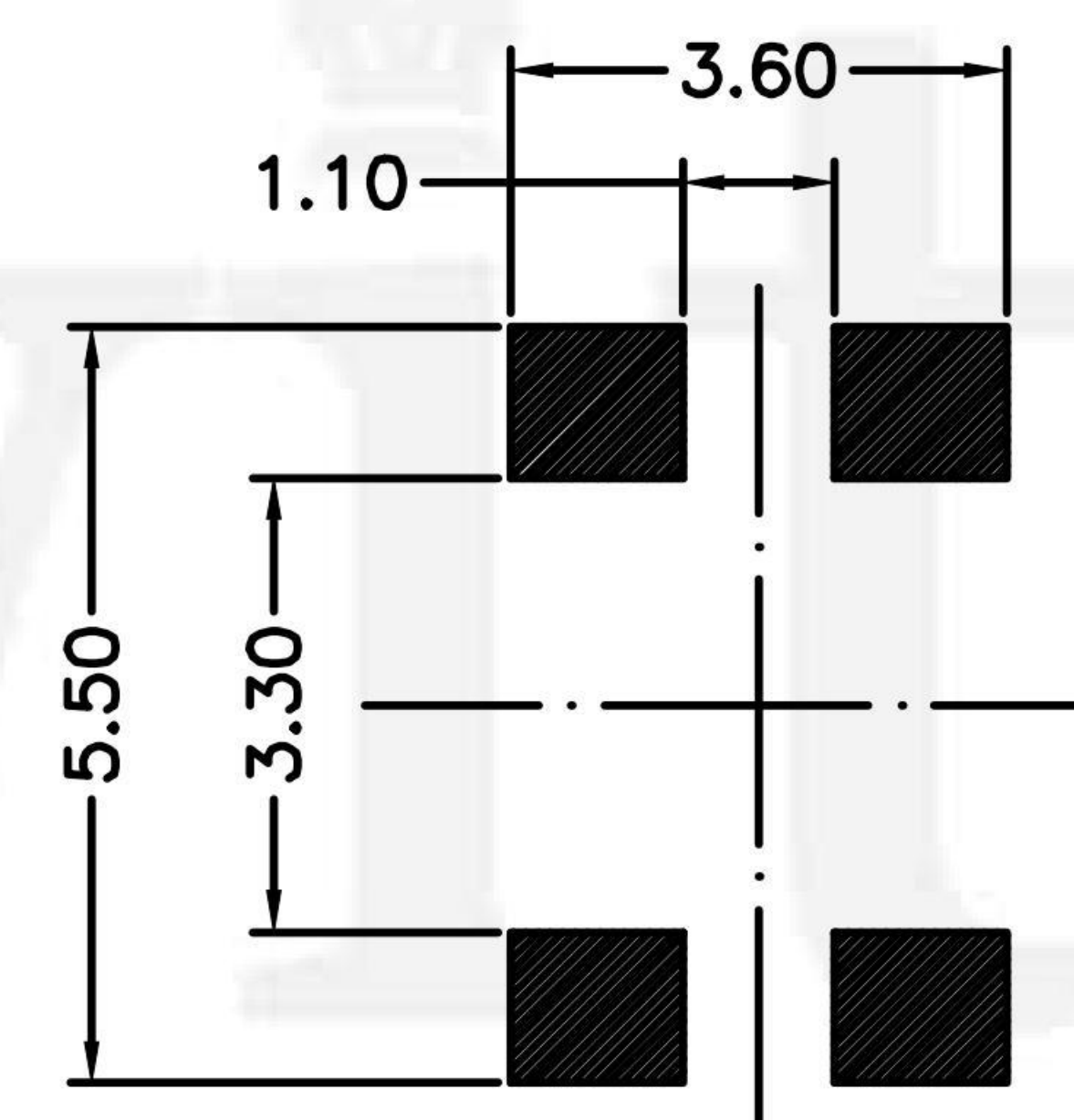
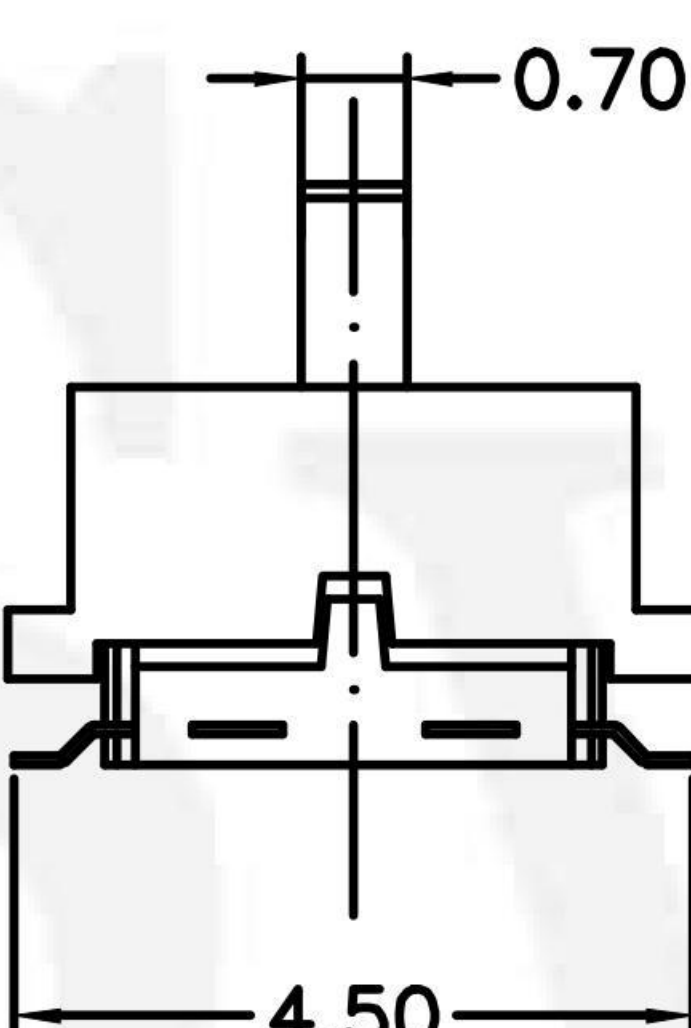
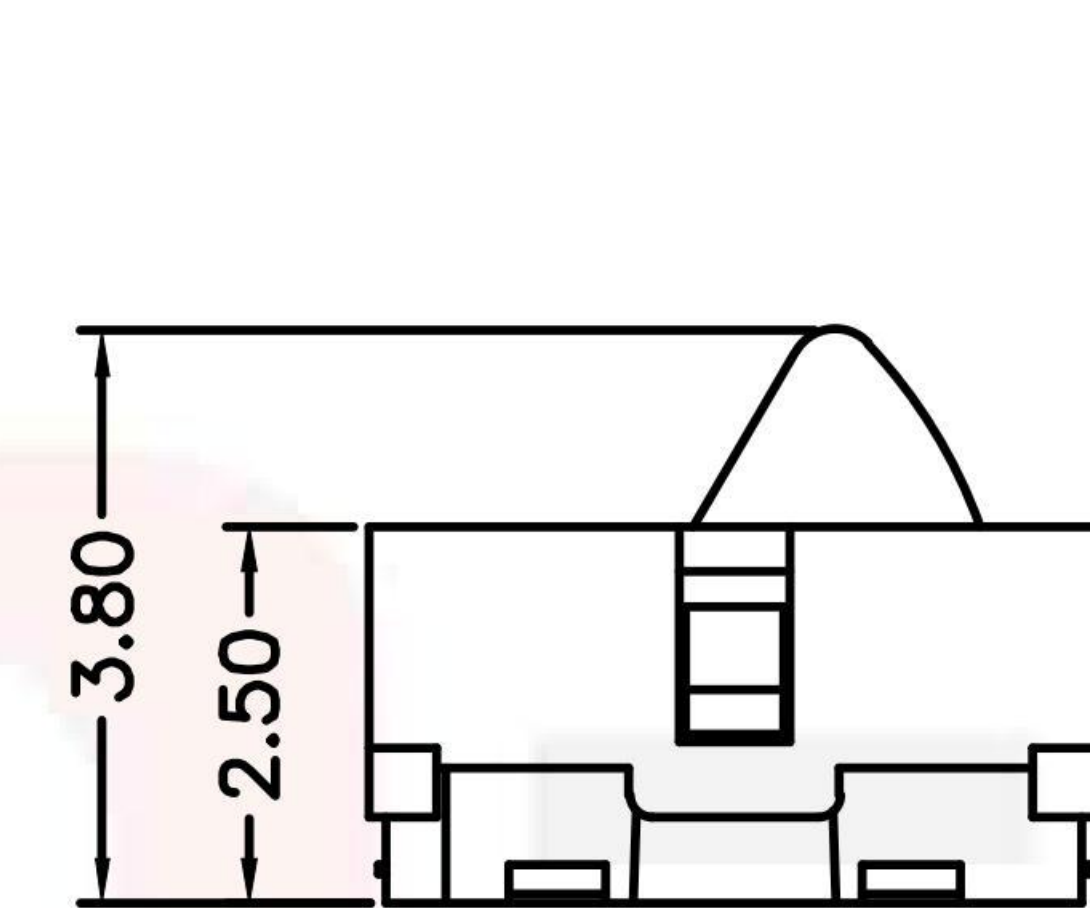
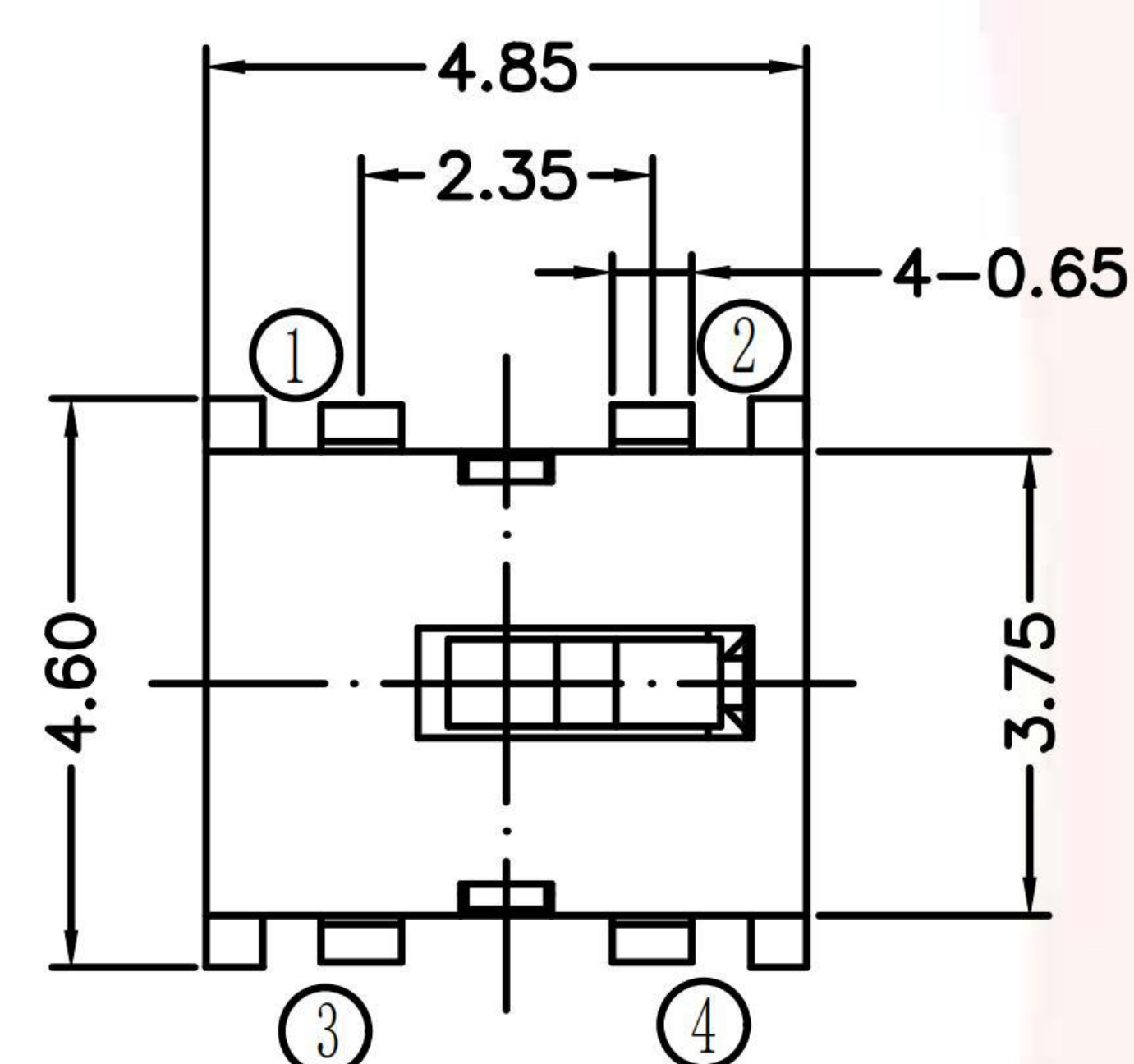
H380=3.8mm

N=Non Pilot
A=Base With Pilot

L05=50,000 Cycles
L1=100,000 Cycles

N=Non Pilot

N=Non Pilot
PCB. 焊接尺寸图

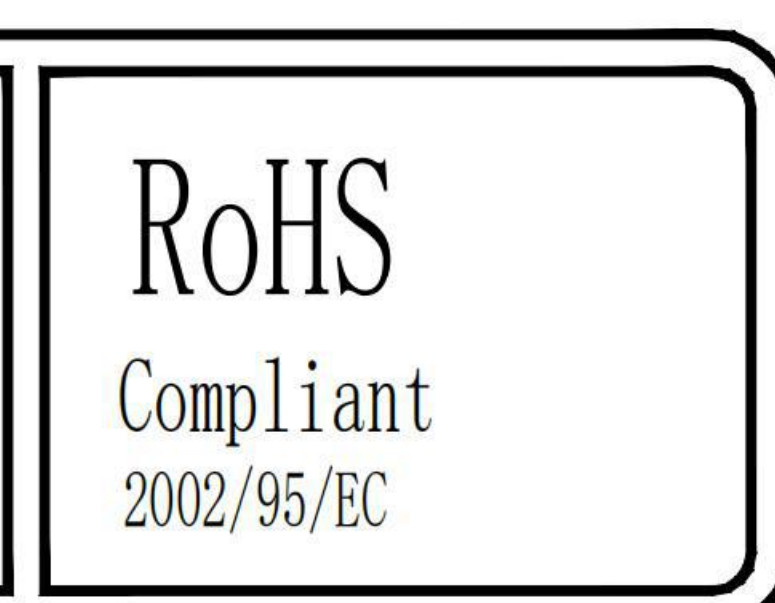
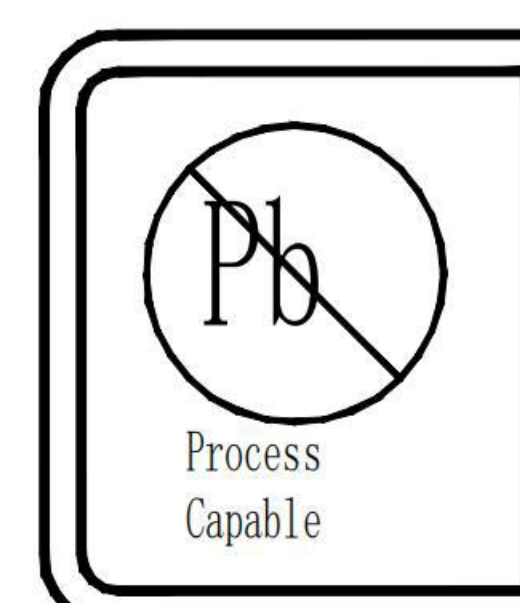
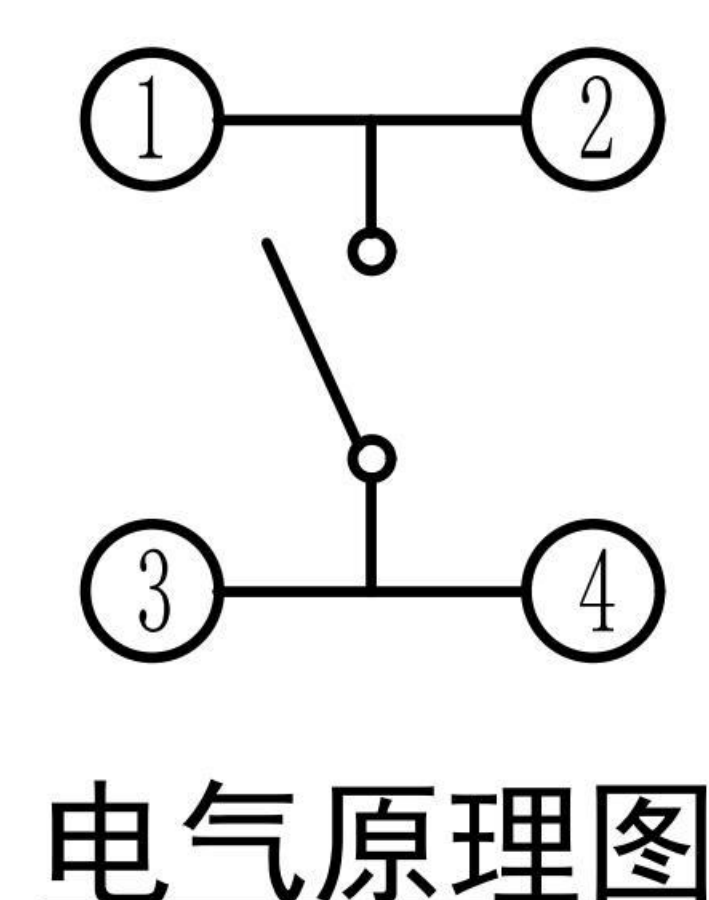


A=Base With Pilot

A=Base With Pilot
PCB. 焊接尺寸图

G-Switch Specification:

Electrical Specifications: 10mA 5V DC
Contact Resistance : 50mΩMAX
Insulation Resistance: 100MΩ min. 100V DC
Withstand Voltage: 100V AC/1 min
Operating Temperature: -10°C~+60°C
Storage Temperature: -40°C~+70°C
Operating Life: 100,000 cycles



G-Switch Electronic (HongKong) CO.,Ltd.

Unless otherwise specified, Tolerance:
X. ±0.30
X.x ±0.20
X.xx ±0.15
X.xxx ±0.10
Angles ±3°

DESIGN Yvette Chen	DATE 2019.05.29
CHECKED	DATE
APPROVED	DATE
http://www.dg-switch.com	
TEL:0769-82388879	

Molde code:		
GT-MPU216-H380-LXX		
REV.: X1	SCALE: 4:1	UNIT: mm
SIZE: A4	SHEET: 1/1	