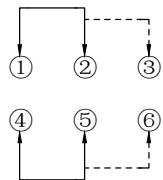
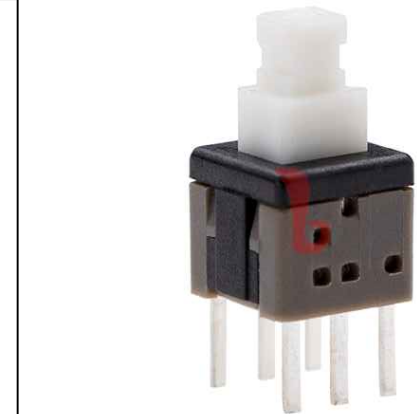
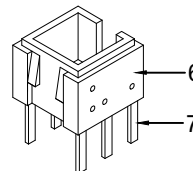
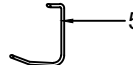
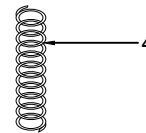
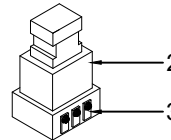
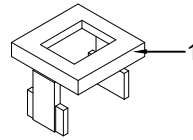
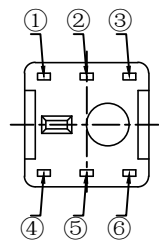


P. C. B LAYOUT



SCHMATIC

**PUSH-ON:**  
2-3,5-6 Conduction  
**PUSH-OFF**  
1-2,4-5 Conduction



**PS-5850DVX-6PN**

**PUSH SWITCH**

**Switch Type**  
58=5.8×5.8mm

**Foot Type**  
D=Dip

**Switch Height**  
50=5.0mm

**Foot Position**  
6P=6pin

**Type**  
D=Different

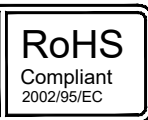
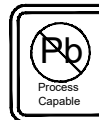
**Operating Force**  
A=180gf  
B=250gf

**Switch Function**  
L=Lock  
N=No Lock

**G-Switch Specification:**

Operating temperature range: -40°C to +85°C  
 Rating: 0.5A.24V DC  
 Insulation resistance: 100MΩ min. 100V DC  
 Dielectric strength: 250V AC for 1 min  
 Contact resistance: 100mΩ max.  
 Switch lifetime: 30,000Cycles

7	TERMINAL	BRASS	6	Ag PLATED
6	CASE	PPA	1	BLACK
5	LOCK PIN	SUS WIRE	1	NATURAL
4	SPRING	SUS WIRE	1	NATURAL
3	CONTACT	BRONZE	2	Ag PLATED
2	KNOB	PPA	1	WHITE
1	COVER	PPA	1	BLACK
NO.	PART NAME	MATERIAL	QTY	FINISHING



Unless otherwise specified, Tolerance:  
 X. ±0.30  
 X.x ±0.20  
 X.xx ±0.15  
 X.xxx ±0.10  
 Angles ±3°

**G-Switch Electronic ( HongKong) CO.,Ltd.**

DESIGN	Feng <sup>2</sup>	DATE	2022.08.12	Molde code:		
CHECKED		DATE		PS-5850DVX-6PN		
APPROVED		DATE		REV.:	X1	SCALE: 4:1
<a href="http://www.dg-switch.com">http://www.dg-switch.com</a>				UNIT:	mm	
TEL:0769-82388879				SIZE:	A4	SHEET: 1/1