

1
2
3
4
5

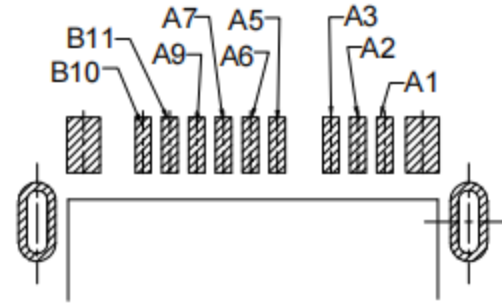
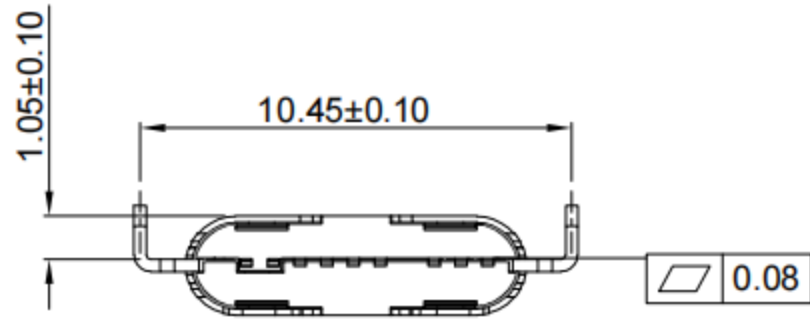
A

B

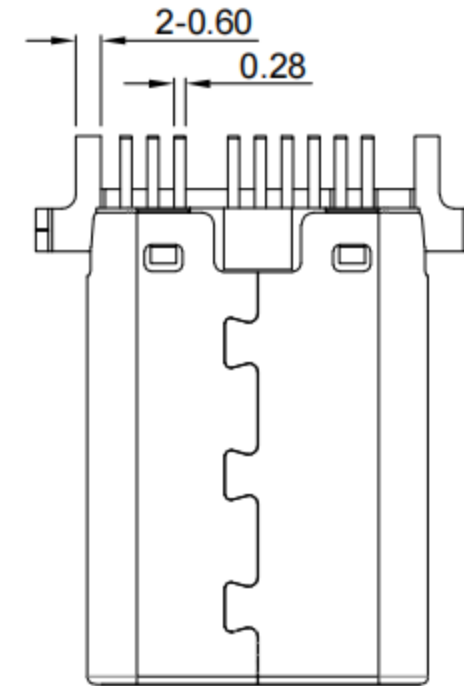
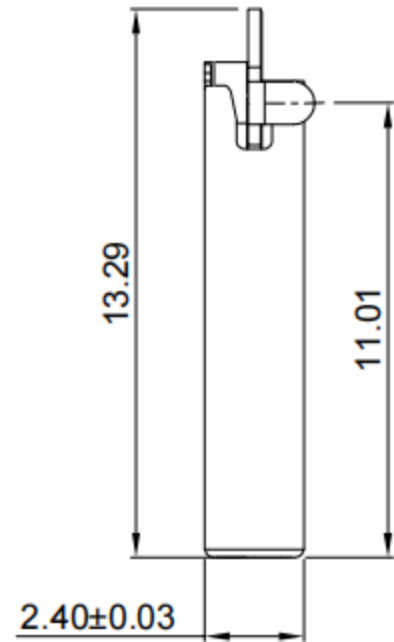
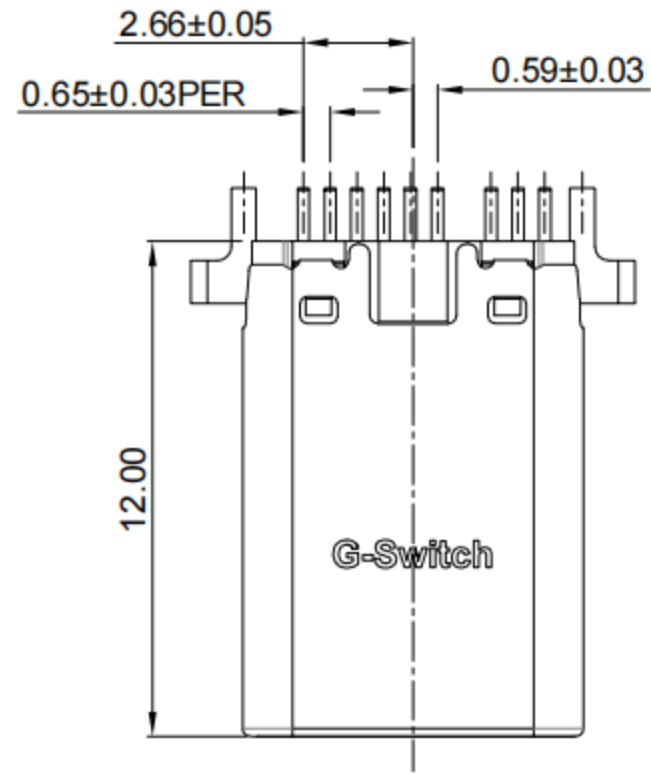
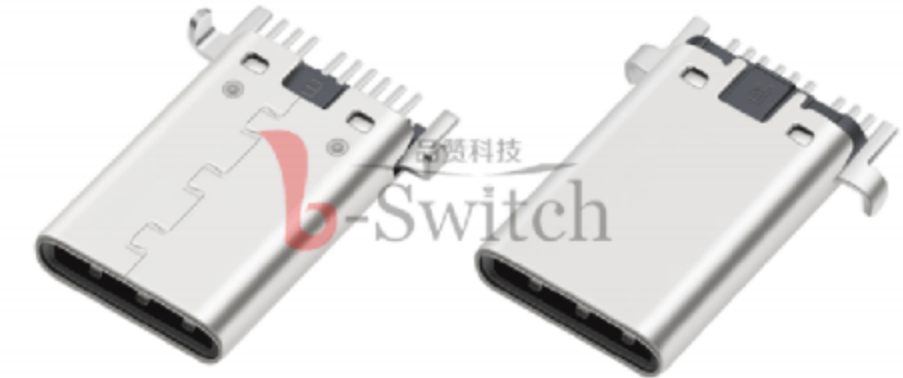
C

D

E

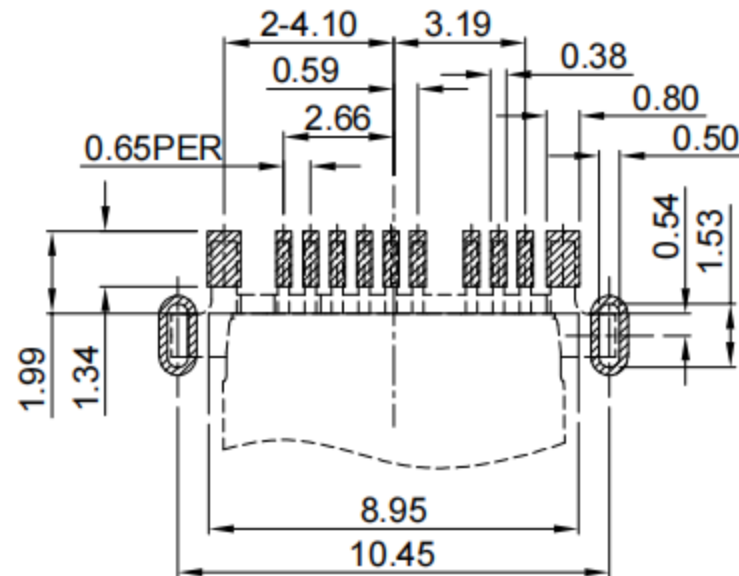
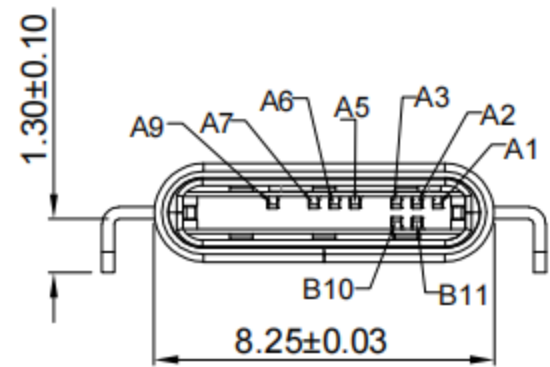


PIN DIGIT DIAGRAM



G-Switch USB-C Specification:

1. Current rated: 3A on vbus/1.25A on vconn/0.25A on other
Voltage rating: 5V AC
2. Withstanding voltage: 100V AC/minute
3. Contact resistance: 40mΩ Max
4. Insulation resistance: 100MΩ Min
5. Operating temperature: -40°C ~ +85°C
6. Mating force: 5N~20N
7. Unmating force: 8N~20N
8. Durability cycle: 10,000 cycles



RECOMMENDED PCB LAYOUT
TOLERANCE: ±0.05

A12	A11	A10	A9	A8	A7	A6	A5	A4	A3	A2	A1
			VBUS		D-	D+	CC1		TX1-	TX1+	GND
			First		Second	Second	Second		Second	Second	First
B1	B2	B3	B4	B5	B6	B7	B8	B9	B10	B11	B12
									RX1-	RX1+	
									Second	Second	

4	TERMINALS	COPPER ALLOY	Au PLATING ON CONTACT AREA
3	LATCH	STAINLESS STEEL	---
2	HOUSING	HIGH TEMPERATURE PLASTIC	BLACK UL 94 V-0
1	SHELL	STAINLESS STEEL	Ni PLATED
NO.	NAME	DESCRIPTION	REMARKS



SCALE: 4:1 UNIT: mm
SIZE: A4

Unless otherwise
General Tolerance:
X. ±0.25
X.x ±0.20
X.xx ±0.15
X.xxx ±0.10
X* ±5°

Title: Horizontal Type-c 9P Plug Sink
SMT L=12.0mm

Molde Code: GT-USB-8016A

DRAWN	CHECKED	APPROVED	DATE
Xia	Chen	Chen	2023.02.01



REV: A0 SHEET: 1/1