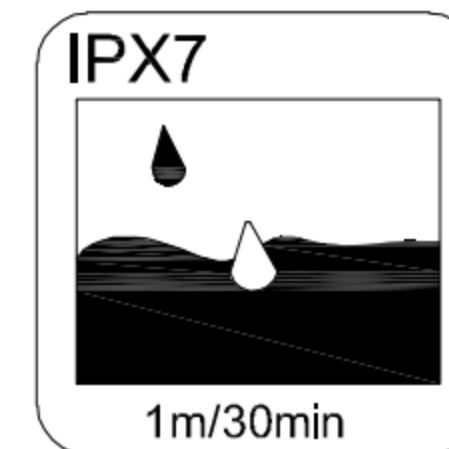
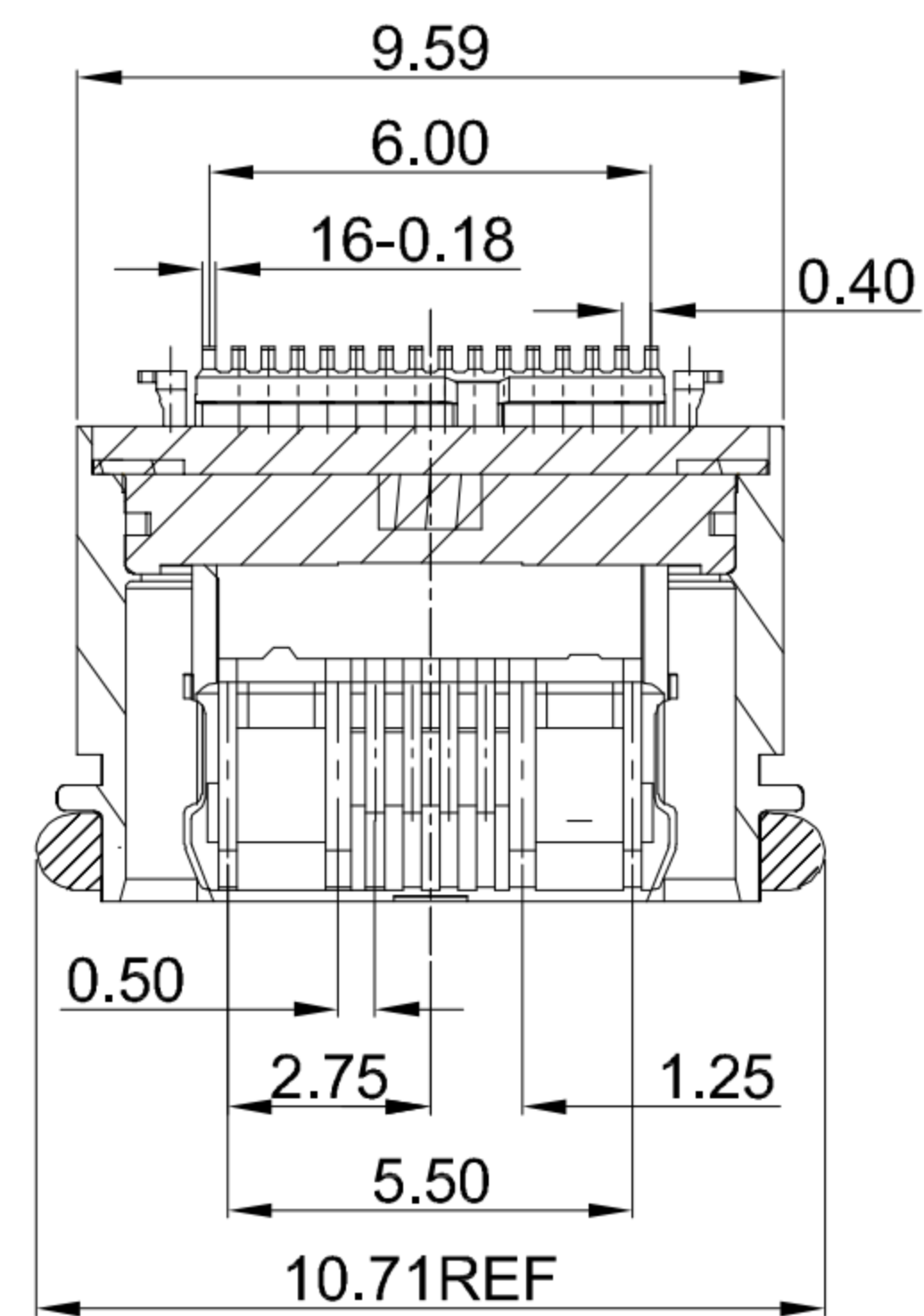
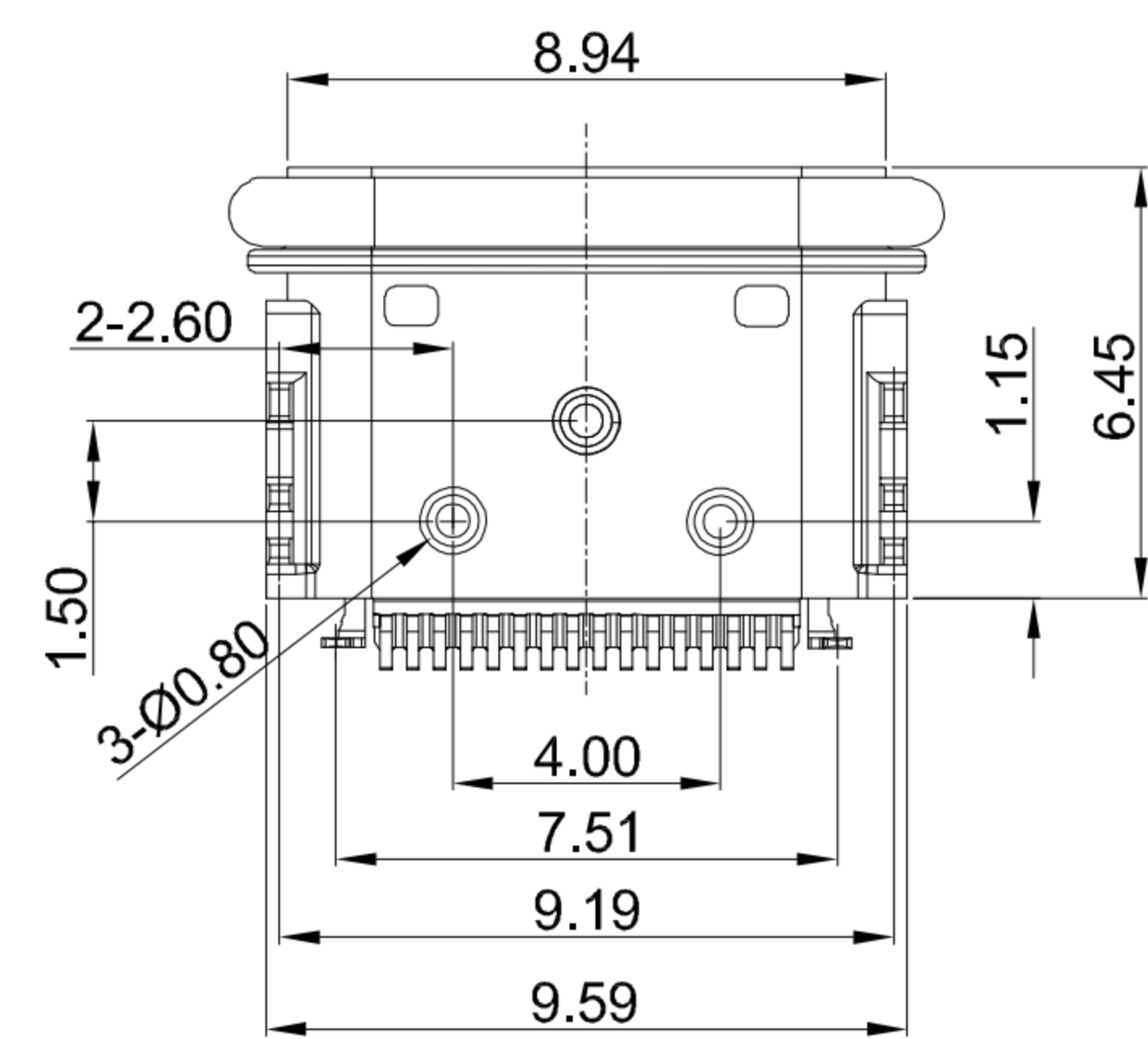
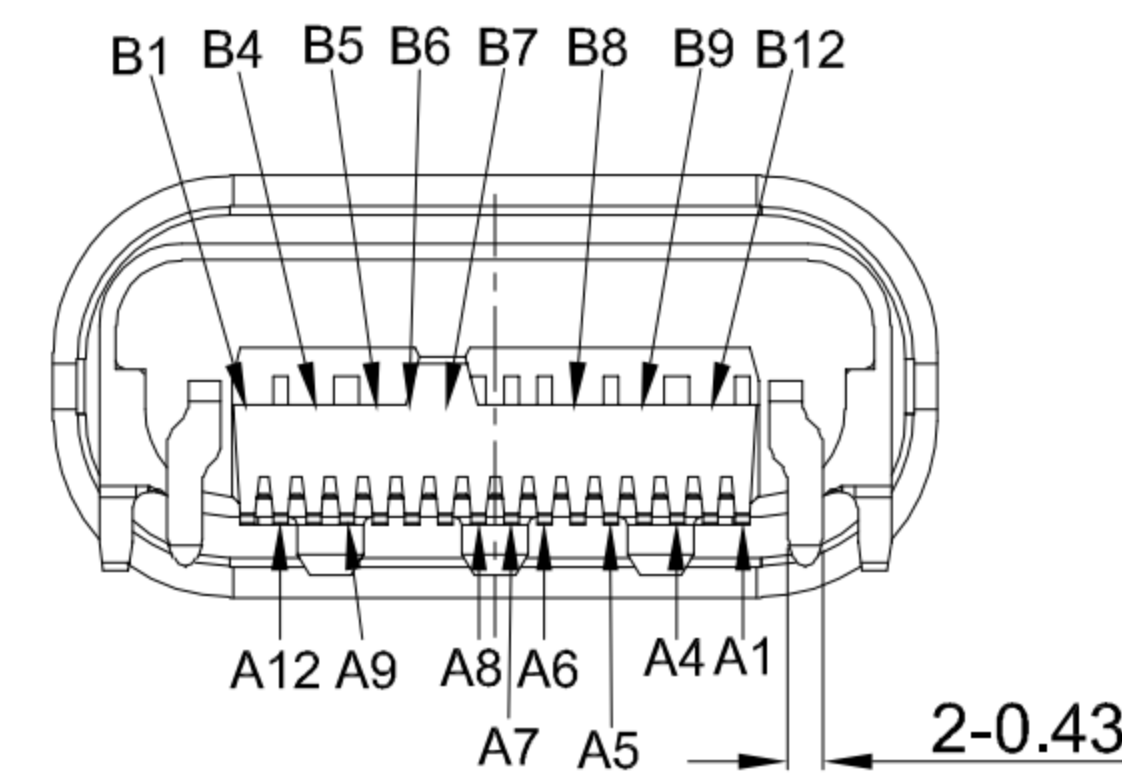
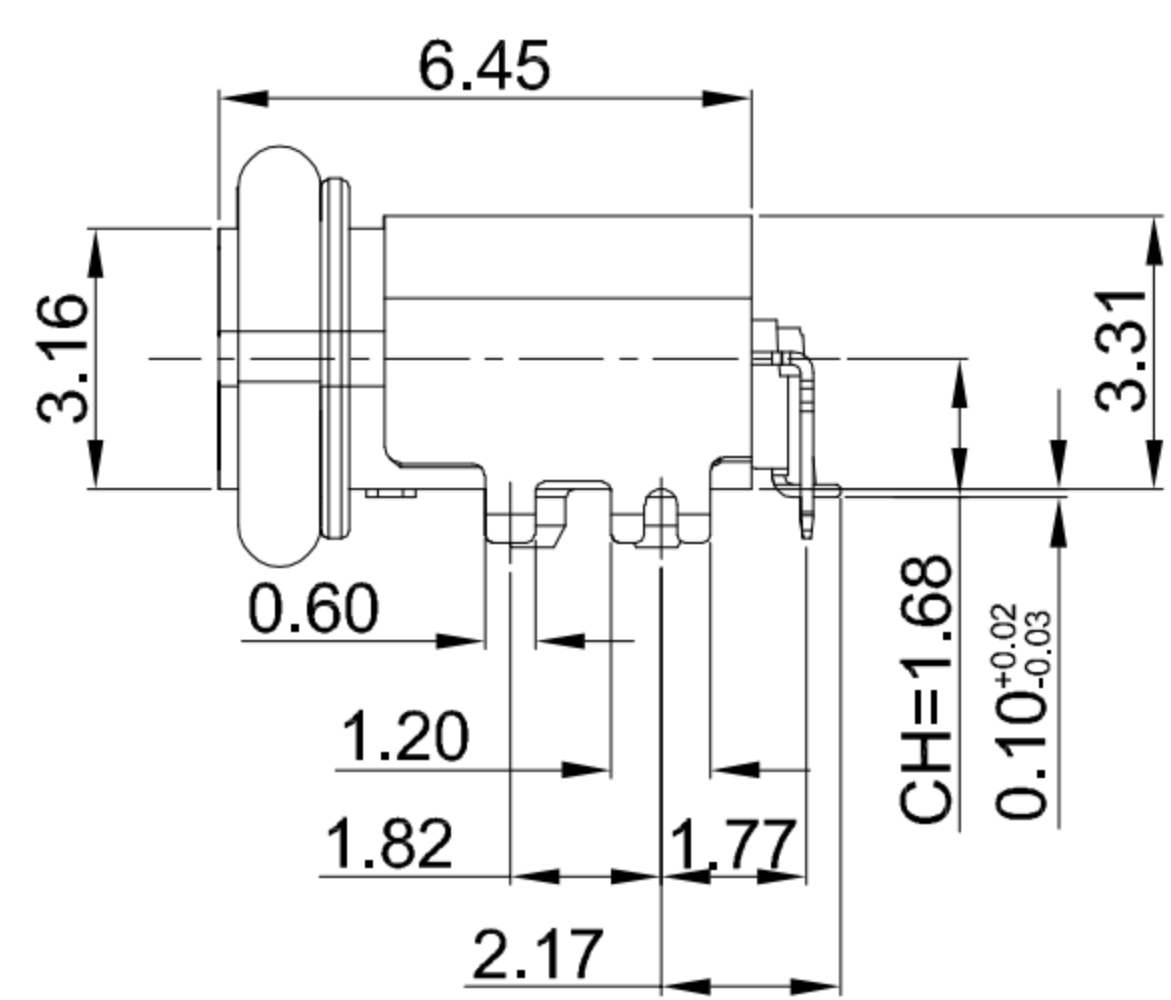
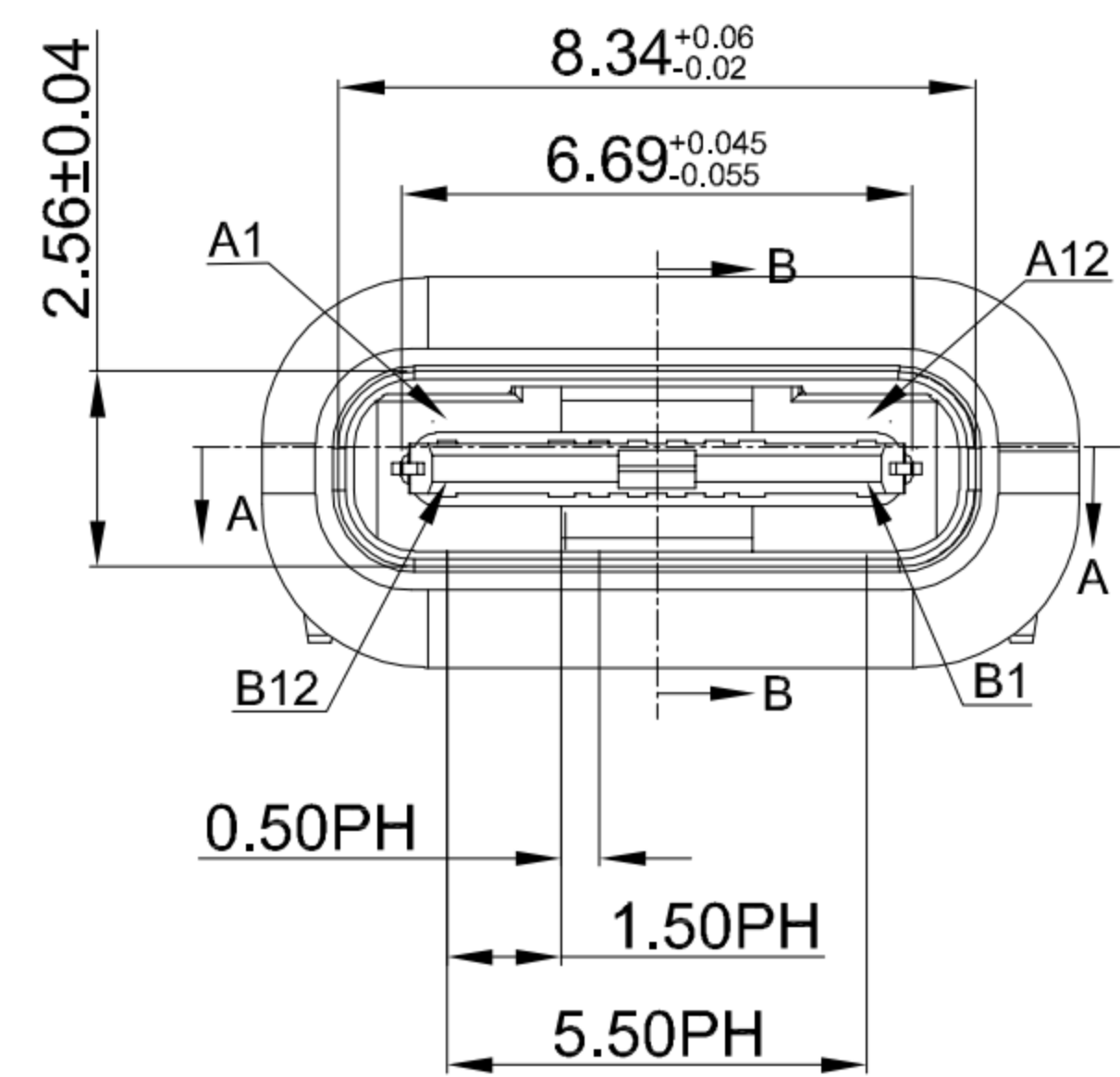


G-Switch USB-C Specification:

1. Current rated: 5A on vbus/1.25A on vconn/0.25A on other
2. Voltage rating: 24V AC
3. Withstanding voltage: 100V AC/minute
4. Contact resistance: 40mΩ Max
5. Insulation resistance: 100MΩ Min
6. Operating temperature: -40°C ~ +85°C
7. Mating force: 5N~20N
8. Unmating force: 8N~20N
9. Durability cycle: 10,000 cycles
9. Waterproof grade: IP-X7

A1	A2	A3	A4	A5	A6	A7	A8	A9	A10	A11	A12
GND			VBUS	CC1	D+	D-	SBU1	VBUS			GND
First			First	Second	Second	Second	Second	First			First

B12	B11	B10	B9	B8	B7	B6	B5	B4	B3	B2	B1
GND			VBUS	SBU2	D-	D+	CC2	VBUS			GND
First			First	Second	Second	Second	Second	First			First



1	Shell	STAINLESS	Ni PLATED
2	INSULATOR	HIGH TEMPERATURE PLASTIC	Black UL 94 V-0
3	MID PLATE	STAINLESS	Ni PLATED
4	TERMINALS	COPPER ALLOY	Au PLATING ON CONTACT AREA
NO.	PARTS	MATERIAL	REMARKS



SCALE: 1:1 UNIT: mm
 SIZE: A4

Unless otherwise
 General Tolerance:
 X. ±0.25
 X.x ±0.20
 X.xx ±0.15
 X.xxx ±0.10
 X° ±5°

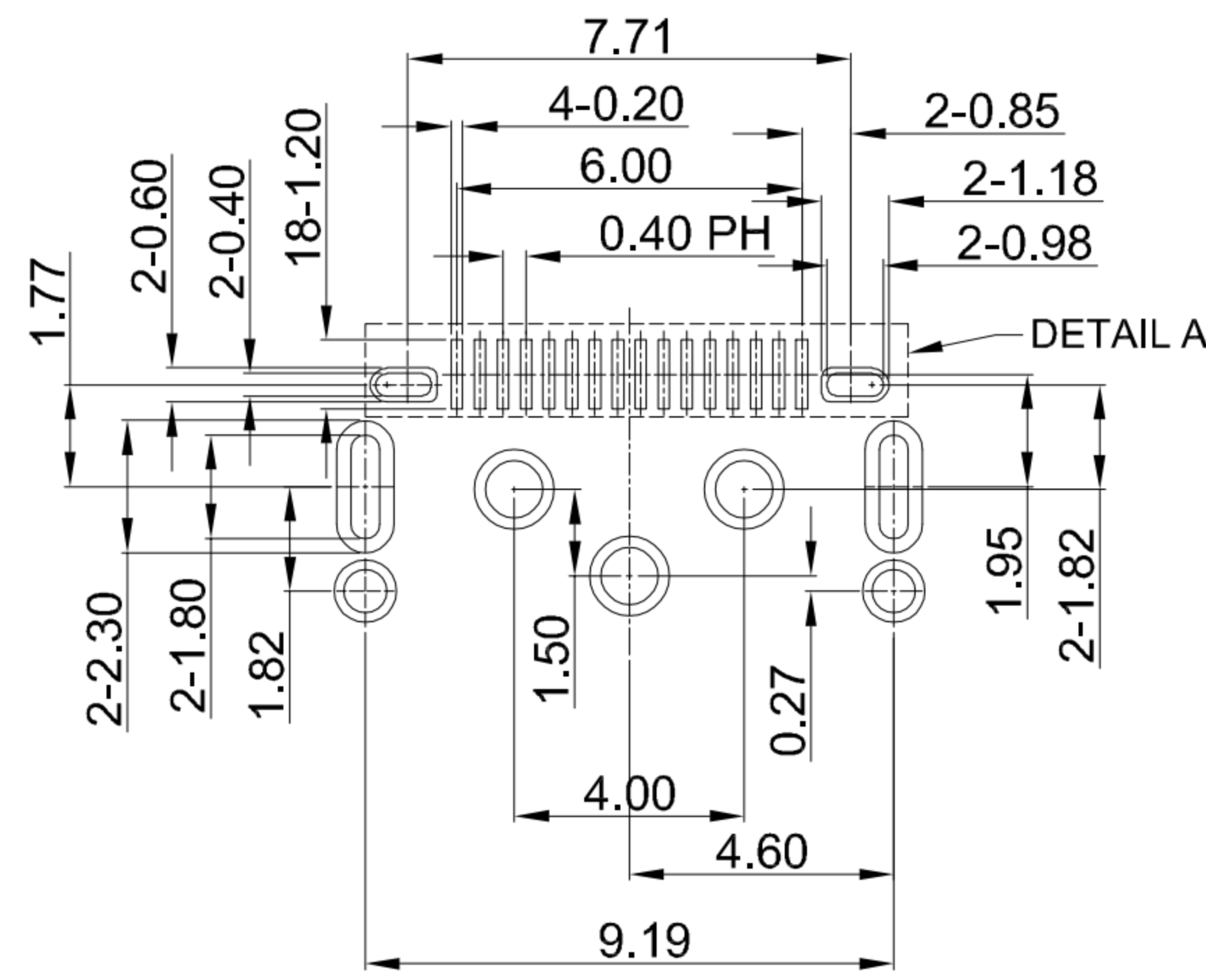
Title: Horizontal Type-c 16P Female
 SMT CH=1.68 L=6.45mm

Molde Code: GT-USB-7022B

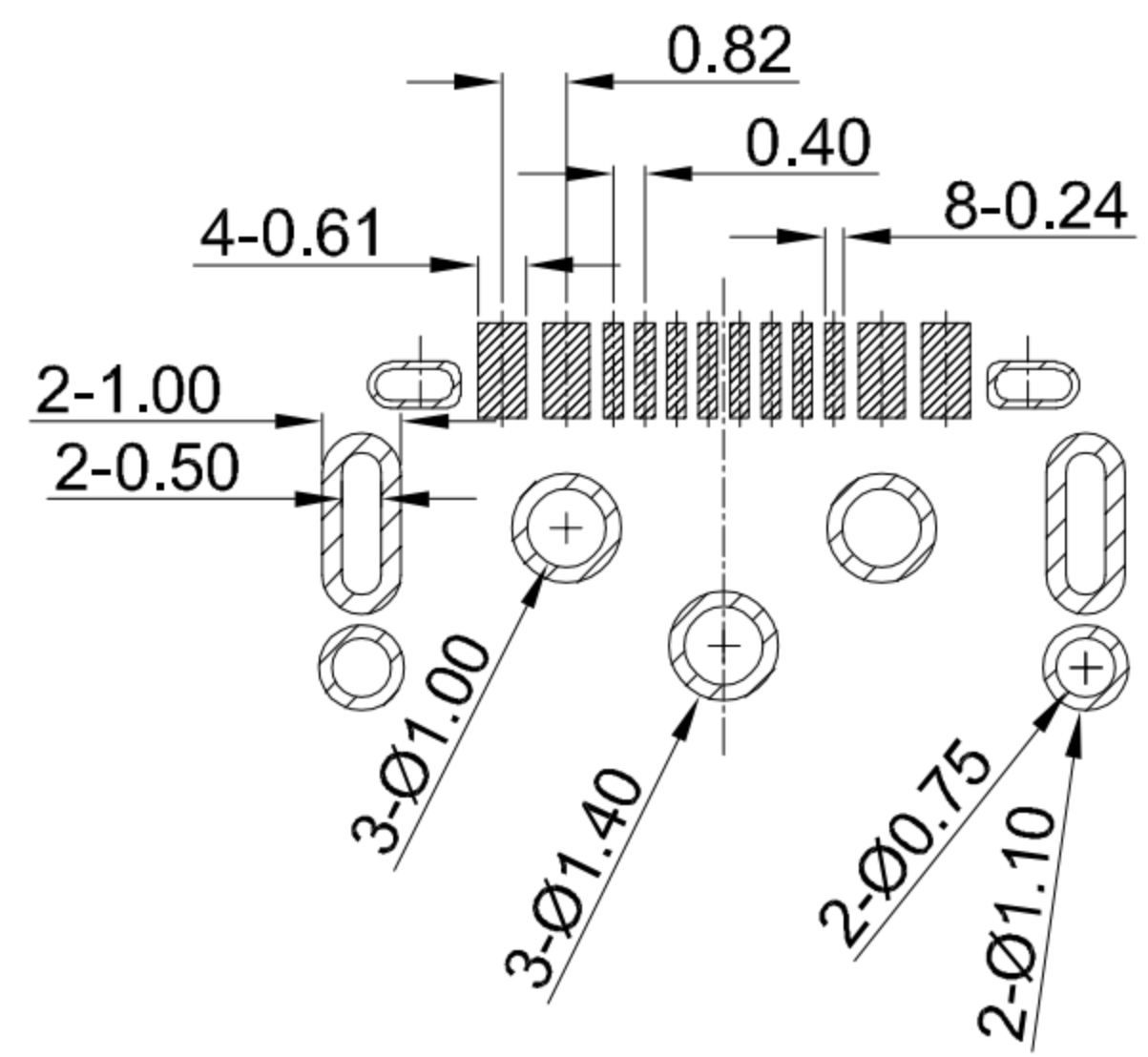
DRAWN	CHECKED	APPROVED	DATE
Xia	Chen	Chen	2023.02.01



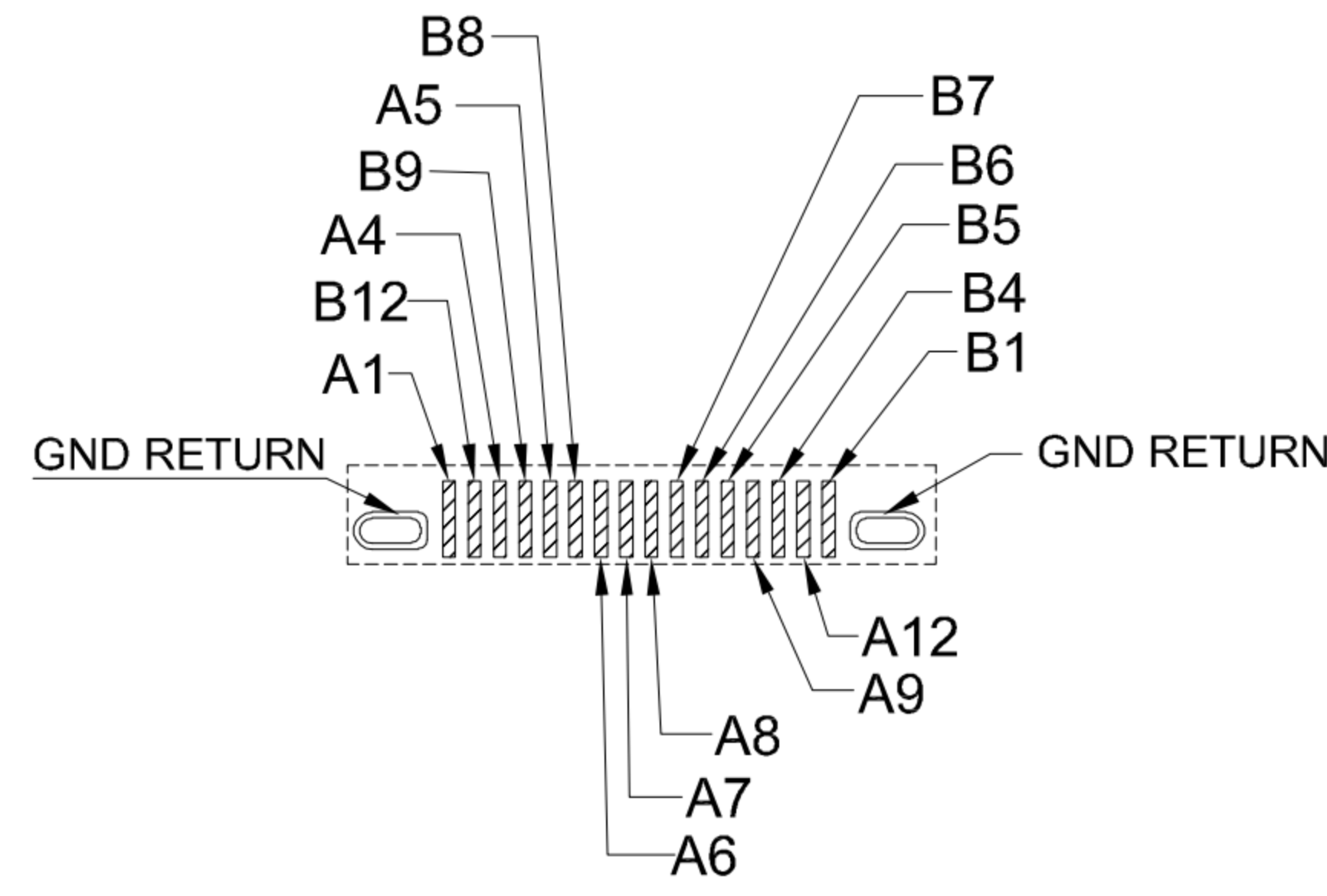
REV: A0 SHEET: 1/2



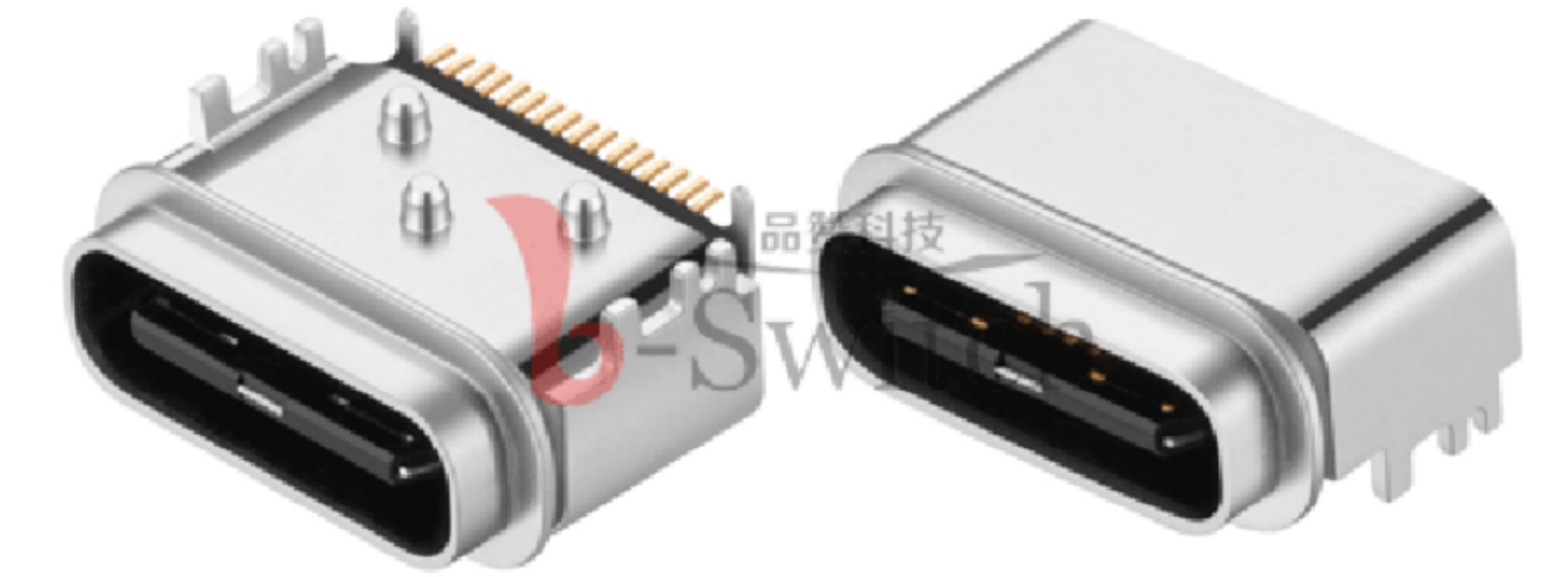
RECOMMENDED PCB LAYOUT
TOLERANCE:±0.05



RECOMMENDED PCB LAYOUT
TOLERANCE:±0.05



DETAIL A

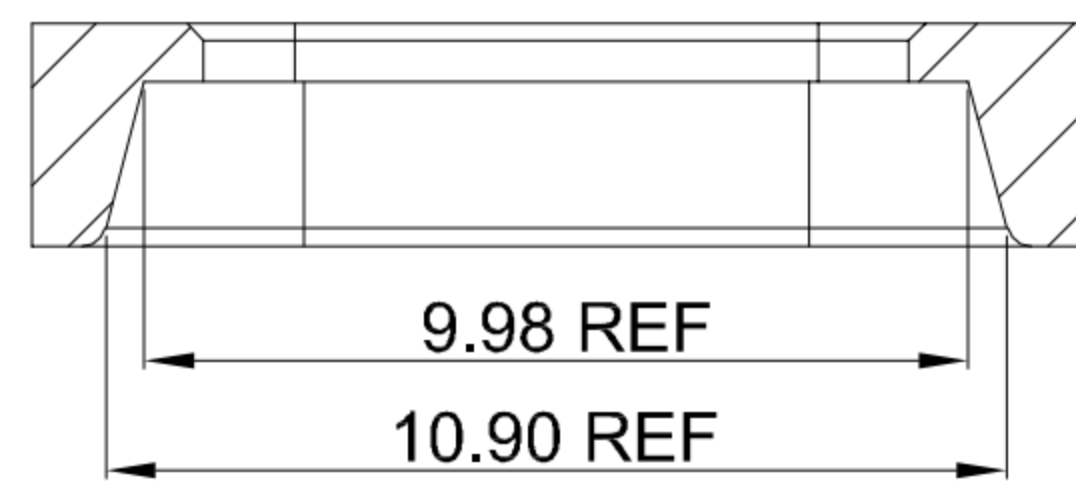


G-Switch USB-C Specification:

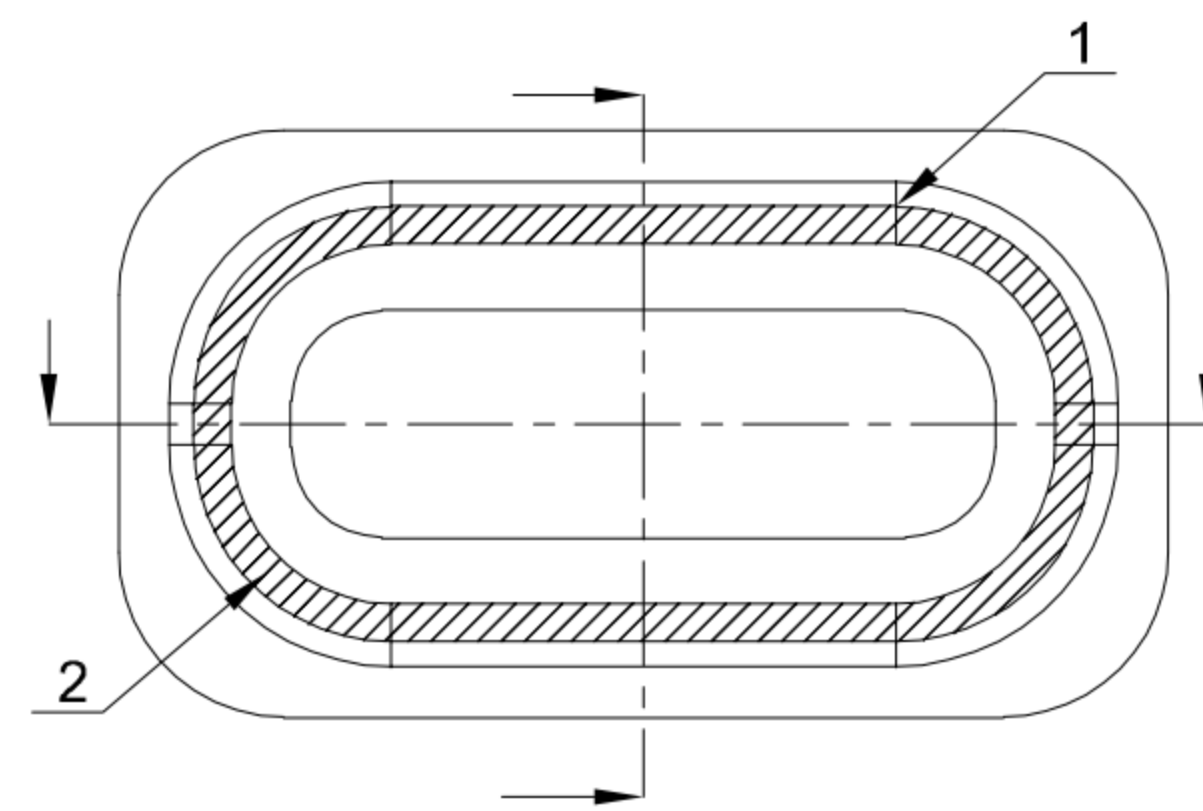
1. Current rated: 5A on vbus/1.25A on vconn/0.25A on other
Voltage rating: 24V AC
2. Withstanding voltage: 100V AC/minute
3. Contact resistance: 40mΩ Max
4. Insulation resistance: 100MΩ Min
5. Operating temperature: -40°C ~ +85°C
6. Mating force: 5N~20N
7. Unmating force: 8N~20N
8. Durability cycle: 10,000 cycles
9. Waterproof grade: IP-X7

Installation recommendations for the housing panel:

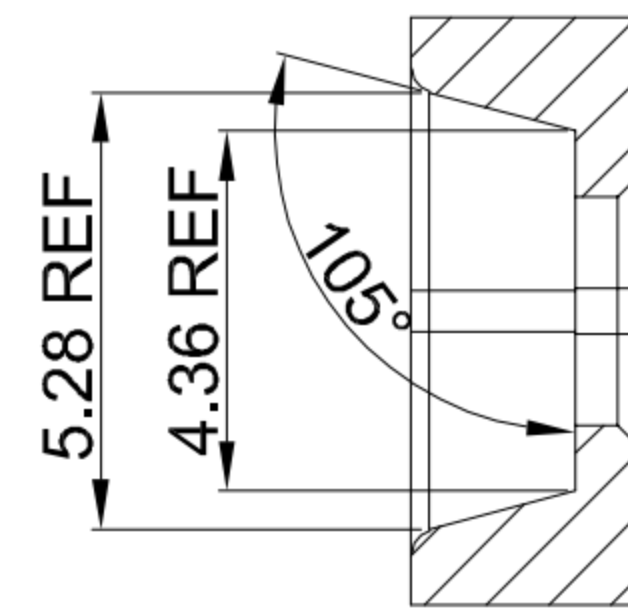
1. The outermost periphery of the housing panel opening and connector rubber ring should be larger than the circumference of the rubber ring to prevent the rubber ring from turning outward during assembly
2. Mirror treatment is required around the opening of the housing panel
3. After the connector is assembled in place, the recommended interference amount between the rim of the housing panel and the rubber ring is $\geq 0.20\text{mm}$



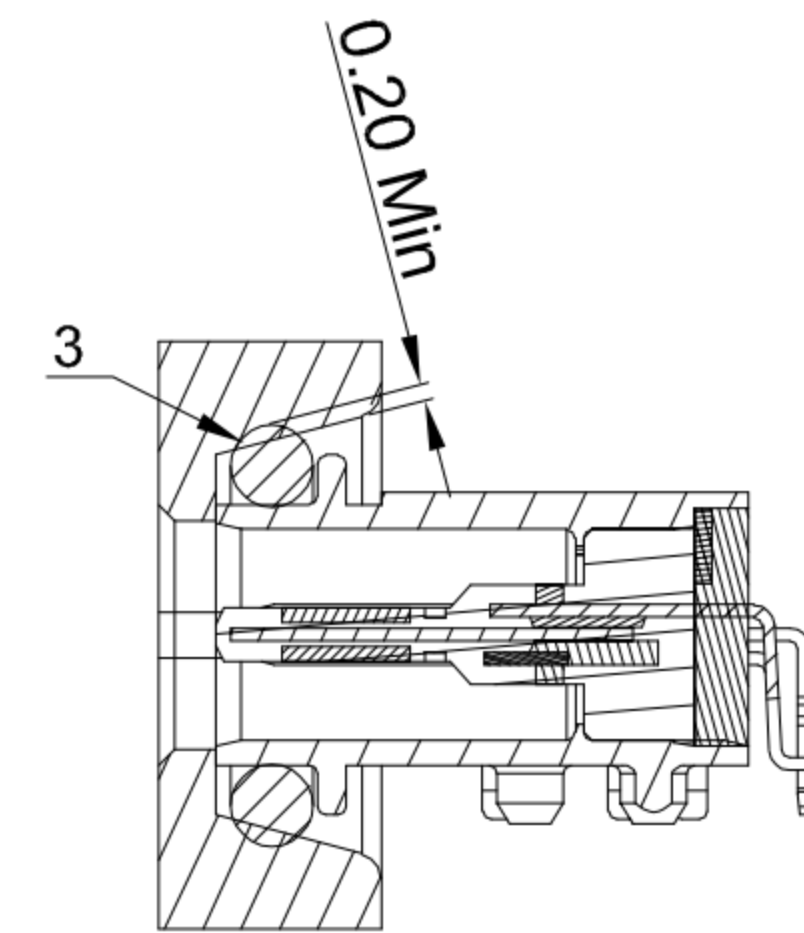
SECTION A-A



CASE ASSEMBLY FOR REFERENCE



SECTION B-B



A1	A2	A3	A4	A5	A6	A7	A8	A9	A10	A11	A12
GND			VBUS	CC1	D+	D-	SBU1	VBUS			GND
First			First	Second	Second	Second	Second	First			First

B12	B11	B10	B9	B8	B7	B6	B5	B4	B3	B2	B1
GND			VBUS	SBU2	D-	D+	CC2	VBUS			GND
First			First	Second	Second	Second	Second	First			First

SCALE: 1:1 UNIT: mm
SIZE: A4

Title: Horizontal Type-c 16P Female
SMT CH=1.68 L=6.45mm

Unless otherwise
General Tolerance:
X. ±0.25
X.x ±0.20
X.xx ±0.15
X.xxx ±0.10
X° ±5°

Molde Code: GT-USB-7022B

DRAWN	CHECKED	APPROVED	DATE
Xia	Chen	Chen	2023.02.01



REV: A0 SHEET: 2/2

