

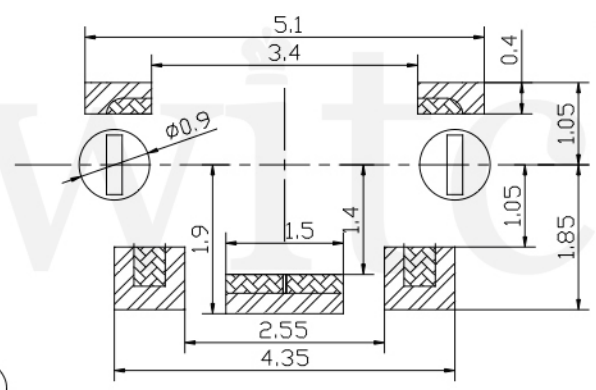
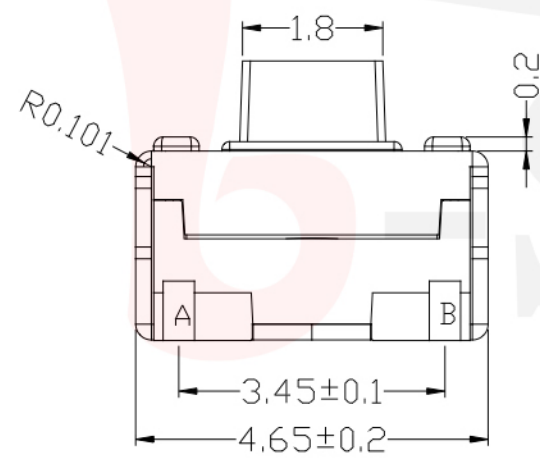
GT-TC172X-H036-LX

G-SWITCH Operating Force
 A=180gf
 B=250gf

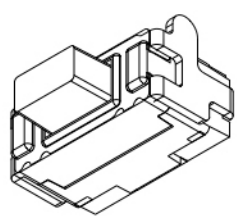
Switch Height (mm)
 H035=3.5mm

Switch lifetime (Force)
 L1=100,000 Cycles
 L3=300,000 Cycles

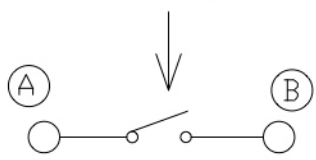
G-Switch Specification:
 Operating temperature range: -30°C to +85°C
 Rating: 50mA.12V DC
 Insulation resistance: 100MΩ min.100V DC
 Dielectric strength: 250V AC for 1 min
 Contact resistance: 100m Ω max.
 Travel: 0.15±0.05mm



P.C.B LAND DIMENSION



Circuit Diagram



<p>Unless otherwise specified, Tolerance: X. ±0.30 X.x ±0.20 X.xx ±0.15 X.xxx ±0.10 Angles ±3°</p>	G-Switch Electronic (HongKong) CO.,Ltd.		
	DESIGN 陈锋枫	DATE 2018.06.29	Molde code:
	CHECKED	DATE	GT-TC172X-HXXX-LX
	APPROVED	DATE	
http://www.dg-switch.com		REV.: X1	SCALE: 4:1
TEL: 0769-82388879		UNIT: mm	
	SIZE: A4	SHEET: 1/1	