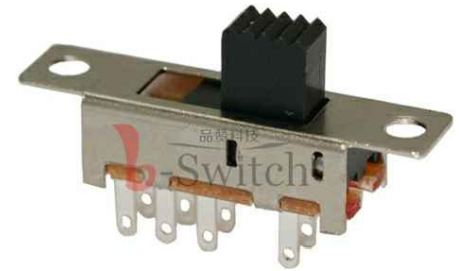
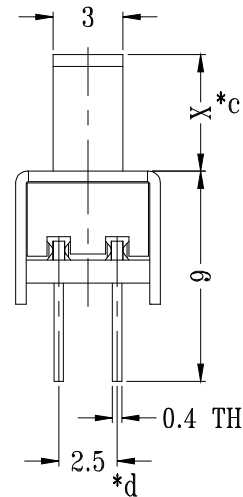
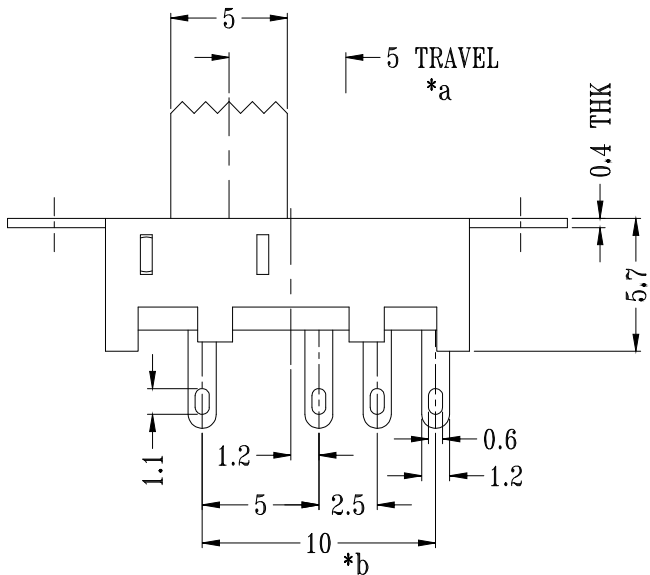


P.C.B LAYOUT  
BOTTOM VIEW



## SS-22J04-GXXX

直柄

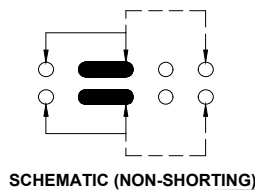
G-Switch P/N

### Switch Height (mm)

G020=2.0 G030=3.0  
G040=4.0 G050=5.0  
G055=5.5 G060=6.0  
G065=6.5 G070=7.0  
G075=7.5 G080=8.0  
G085=8.5 G090=9.0  
G095=9.5 G100=10.0

### G-Switch Specification:

Electrical Specifications: 1.0A/DC24V  
Contact resistance (CR):  $\leq 50\text{m}\Omega$   
Insulation Resistance(IR):  $\geq 100\text{M}\Omega$  DC250V  
Compressive strength (WV): AC250V 1minute  
Operating temperature:  $-25^{\circ}\text{C}\sim+70^{\circ}\text{C}$   
Storage humidity:  $<85\%\text{RH}$   
Electrical life: 10,000Cycles.



## G-Switch Electronic (HongKong) CO.,Ltd.

Unless otherwise specified, Tolerance:  
X.  $\pm 0.30$   
X.x  $\pm 0.20$   
X.xx  $\pm 0.15$   
X.xxx  $\pm 0.10$   
Angles  $\pm 3^{\circ}$

DESIGN FengFengChen DATE 2019.05.29  
CHECKED DATE  
APPROVED DATE  
<http://www.dg-switch.com>  
TEL:0769-82388879

Molde code:  
**SS-22J04-GXXX**  
REV.: X1 SCALE: 4:1 UNIT: mm  
SIZE: A4 SHEET: 1/1