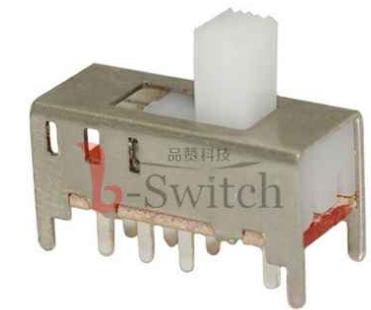
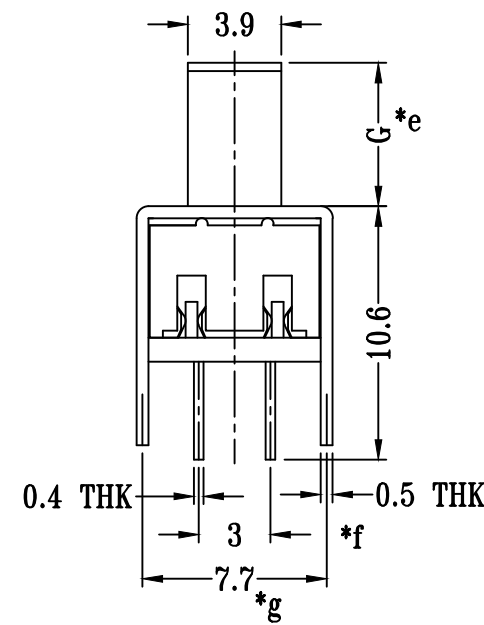
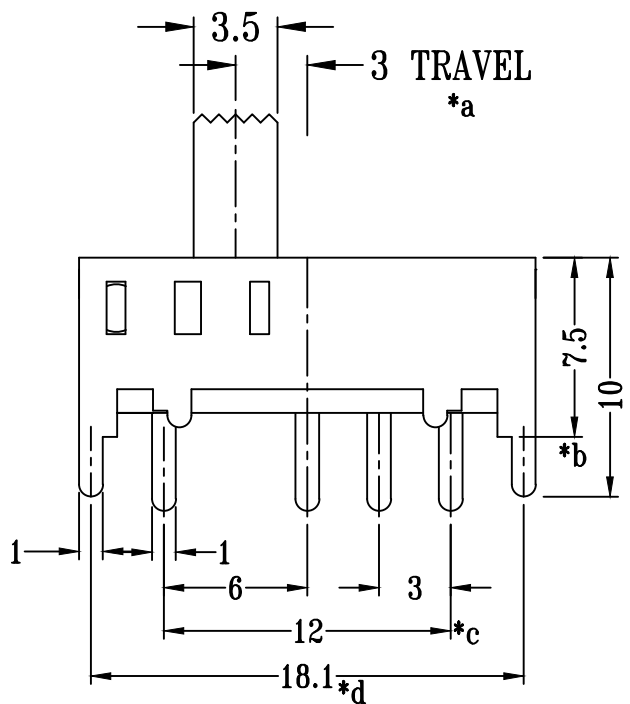


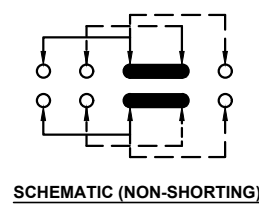
**P.C.B LAYOUT
BOTTOM VIEW**



SS-23F10-GXXX

- 直柄
- G-Switch P/N
- Switch Height (mm)
 - G020=2.0 G030=3.0
 - G040=4.0 G050=5.0
 - G055=5.5 G060=6.0
 - G065=6.5 G070=7.0
 - G075=7.5 G080=8.0
 - G085=8.5 G090=9.0
 - G095=9.5 G100=10.0

G-Switch Specification:
 Electrical Specifications: 1.0A/DC24V
 Contact resistance (CR): ≤50mΩ
 Insulation Resistance(IR): ≥100MΩ DC250V
 Compressive strength (WV): AC250V 1minute
 Operating temperature: -25°C~+70°C
 Storage humidity: <85%RH
 Electrical life: 10,000Cycles.



	G-Switch Electronic (HongKong) CO.,Ltd.		
	DESIGN FengFengChen	DATE 2019.05.29	Molde code:
Unless otherwise specified, Tolerance: X. ±0.30 X.x ±0.20 X.xx ±0.15 X.xxx ±0.10 Angles ±3°	CHECKED	DATE	SS-23F10-GXXX
	APPROVED	DATE	
	http://www.dg-switch.com		REV.: X1 SCALE: 4:1 UNIT: mm
	TEL:0769-82388879	SIZE: A4 SHEET: 1/1	