

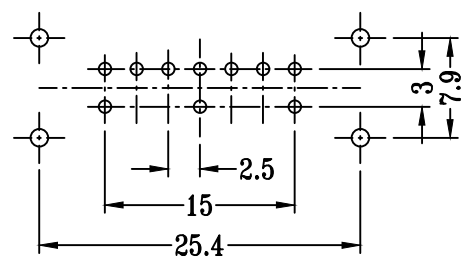
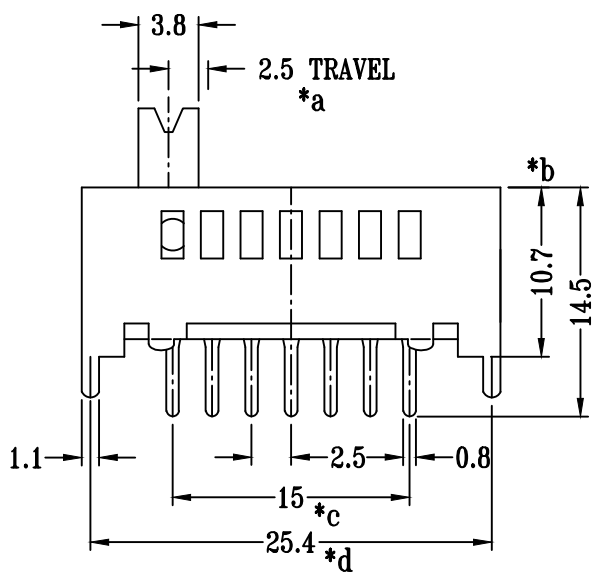
### SS-17E01-GXXX

直柄

G-Switch P/N

#### Switch Height (mm)

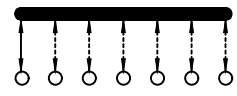
- G020=2.0 G030=3.0
- G040=4.0 G050=5.0
- G055=5.5 G060=6.0
- G065=6.5 G070=7.0
- G075=7.5 G080=8.0
- G085=8.5 G090=9.0
- G095=9.5 G100=10.0



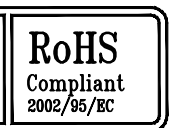
P.C.B LAYOUT  
BOTTOM VIEW

#### G-Switch Specification:

Electrical Specifications: 1.0A/DC24V  
 Contact resistance (CR):  $\leq 50\text{m}\Omega$   
 Insulation Resistance(IR):  $\geq 100\text{M}\Omega$  DC250V  
 Compressive strength (WV): AC250V 1minute  
 Operating temperature:  $-25^\circ\text{C}\sim+70^\circ\text{C}$   
 Storage humidity:  $<85\%\text{RH}$   
 Electrical life: 10,000Cycles.



SCHEMATIC (SHORTING)



## G-Switch Electronic (HongKong) CO.,Ltd.

Unless otherwise specified, Tolerance:  
 X.  $\pm 0.30$   
 X.x  $\pm 0.20$   
 X.xx  $\pm 0.15$   
 X.xxx  $\pm 0.10$   
 Angles  $\pm 3^\circ$

DESIGN FengFengChen	DATE 2019.05.29
CHECKED	DATE
APPROVED	DATE
<a href="http://www.dg-switch.com">http://www.dg-switch.com</a>	
TEL:0769-82388879	

Molde code:		
SS-17E01-GXXX		
REV.: X1	SCALE: 4:1	UNIT: mm
SIZE: A4	SHEET: 1/1	